

GANZ Installation Tool

User's Manual

GANZ Installation Tool

Device Selection

Select a device to setup or upgrade

Manual Setup

Refresh Devices

^

Firmware Upgrade

Restore Default

GIT

GANZ Installation Tool

MAC	IP Address	Model
00-1C-B8-50-00-01	192.168.5.123	ZV-S306
00-1C-B8-10-00-21	192.168.5.10	ZN-PT304L
00-1C-B8-20-18-FD	192.168.5.175	ZN-PT304WL
00-1C-B8-50-00-02	192.168.5.102	ZV-S306

Please check the MAC and model name in the product label of your device first. Then, you can start to link to your device and show the main screen by double clicking the item in the above selection list.


If you are not able to find your device in the above selection list, please make sure all cables are properly connected to your device and then click on the "Refresh Devices" button.

IP Camera


GANZ

Model NO: ZN-PT304WL

MAC: 001CB822437



This device complies with part 15 of the FCC rules. Operation is subject to the following two conditions:
(1) This device may not cause harmful interference, and
(2) This device must accept any interference received, including interference that may cause undesired operation.
FAL-6306700 Made in Taiwan



You can find the product label in the rear/bottom part of your device.

Contents

Chapter 1	Installation.....	1-1
1.1	Software Installation	1-1
Chapter 2	Using GANZ Installation Tool.....	2-4
2.1	User Interface.....	2-4
2.1.1	Action buttons	2-6
2.1.2	Function buttons	2-7
2.2	Manual Setup.....	2-9
2.2.1	System Setting.....	2-10
2.2.2	Network Setting	2-13
2.2.3	Wireless Setting.....	2-16
2.2.4	Apply to selected device.....	2-21
2.3	Upgrade	2-23
2.3.1	Device Information.....	2-24
2.3.2	Firmware Information	2-25
2.3.3	Select Firmware	2-25
2.3.4	Start Upgrade	2-27



Chapter 1 Installation

1.1 Software Installation

The following are steps for the software installation.

STEP 1: Put the Installation disk into the CD-ROM drive, and the installation should start automatically. If the installation does not start, click on “Start” on the lower left corner of your screen, open “My Computer” and double click on the CD-ROM icon. The GANZ Installation Tool Installation Window will appear as Figure 1-1.

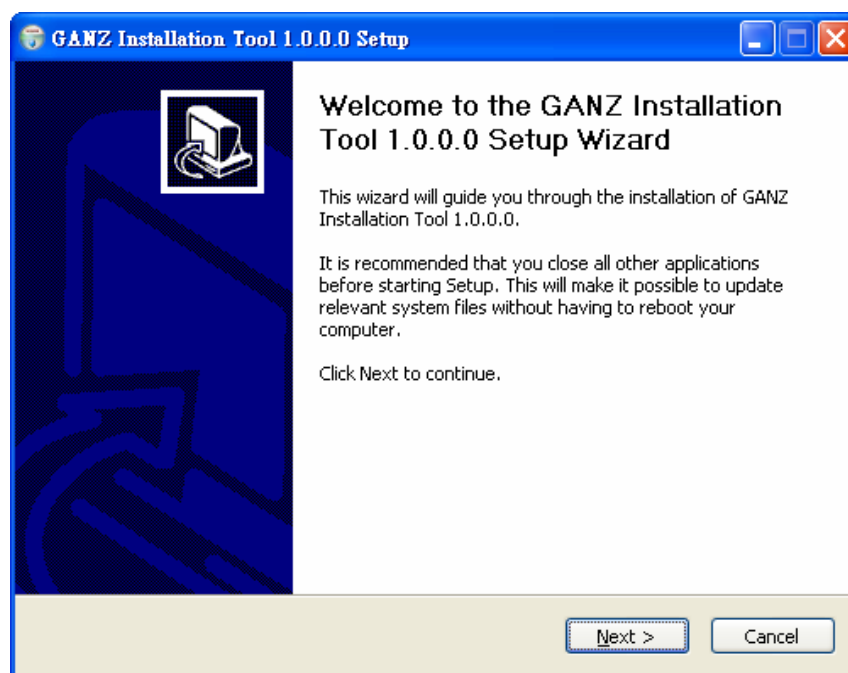


Figure 1-1 GANZ Installation Tool Installation Window

STEP 2: Please read the license agreement first, and then click on “I Agree” to continue the installation process.

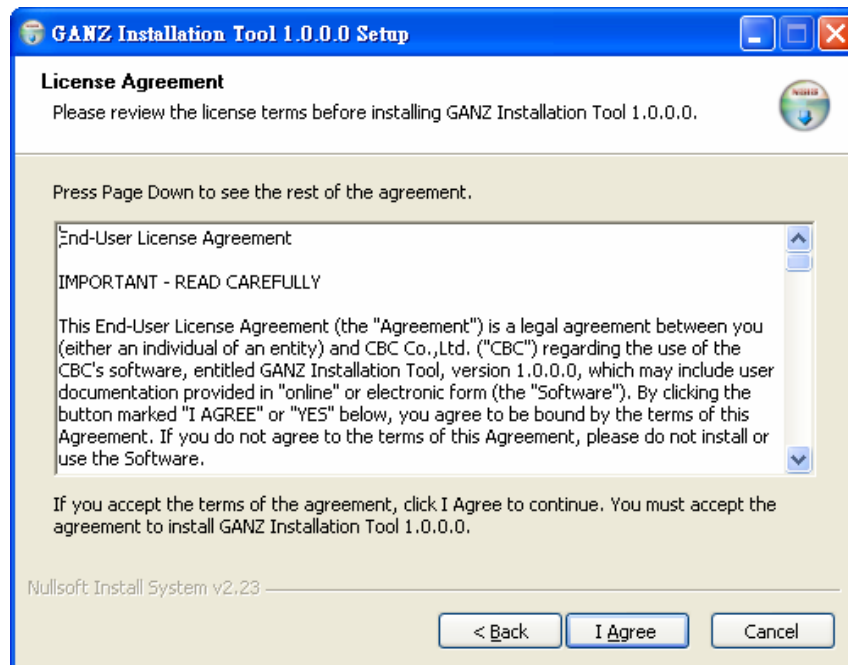


Figure 1-2 License Agreement

STEP 3: The install process will go on and then Figure 1-3 will appear. Select the installation directory for this application software and click on “Install” button. You can also change the installation directory by clicking on “Browse...” button. After the proper directory chose, please click on the “Install” button to continue.

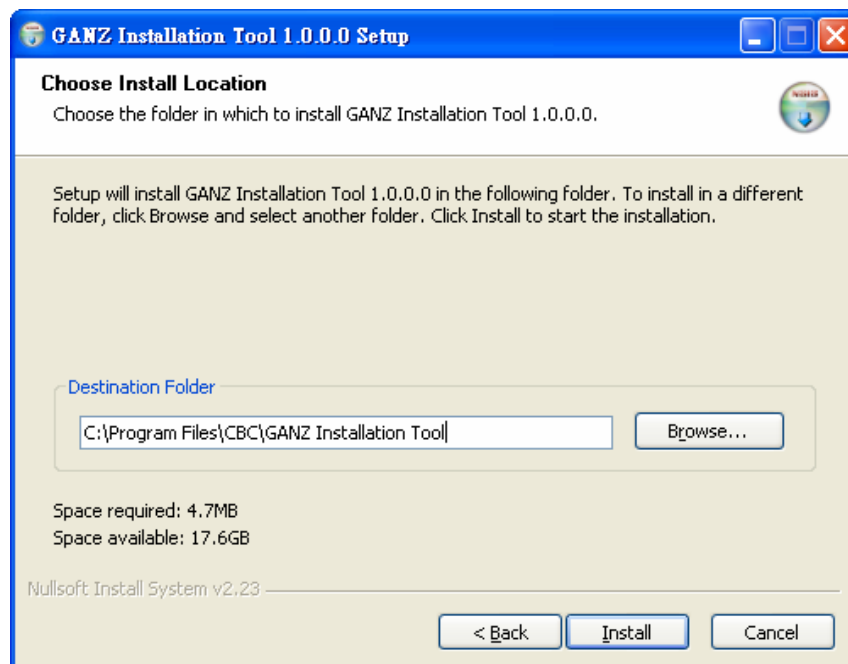


Figure 1-3 Destination Location for Installation

STEP 4: After clicking “Install” button, the install system will install the GANZ Installation Tool



to your computer, and a progress bar will display on the dialog. After completed the installation, please click on the “Finish” button (Figure 1-2).

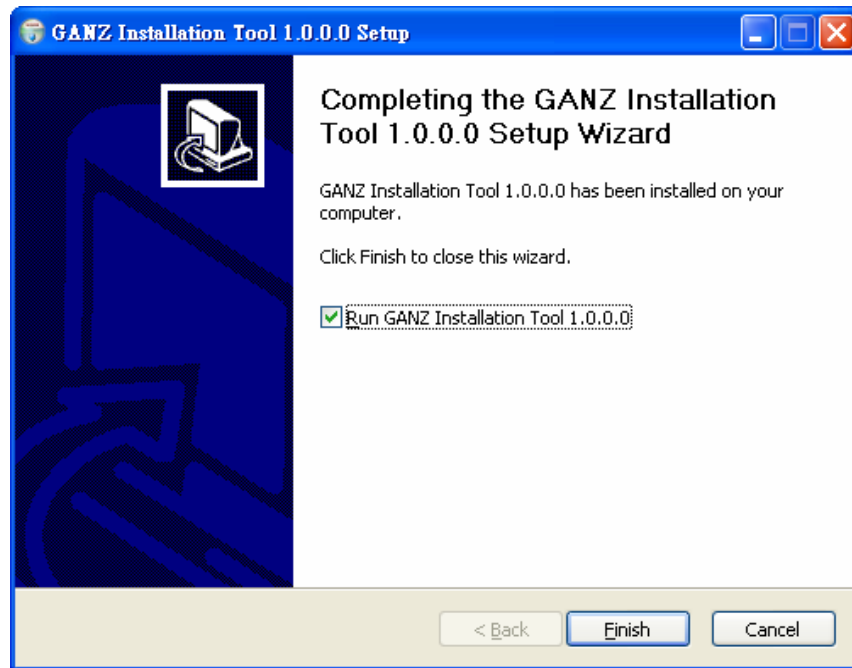


Figure 1-2 Completed



Chapter 2 Using GANZ Installation Tool

2.1 User Interface



Figure 2-1 User interface of GANZ Installation Tool

Once you run the GANZ Installation Tool, you will see the user interface as shown in Figure 2-2. “**Manual Setup**” button, a “**Refresh Devices**” button and an arrow button on the left panel of your user interface. When you click on the arrow button, you will see more advanced functional buttons: “**Access Information**”, “**Firmware Upgrade**”, “**Restore Default**” and “**GIT**” (Figure 2-2). You can select your device by double-clicking it in the device list. The left four buttons (“**Manual Setup**”, “**Access Information**”, “**Firmware Upgrade**”, and “**Restore Default**”) won’t be



enabled until you select at least one device. The GANZ Installation Tool allows you to setup one device at one time and upgrade multiple devices (of the same model) at the same time. If you selected different models, then the **“Firmware Upgrade”** button would be disabled.



Figure 2-2 User interface of GANZ Installation Tool after clicking on the arrow button



2.1.1 Action buttons

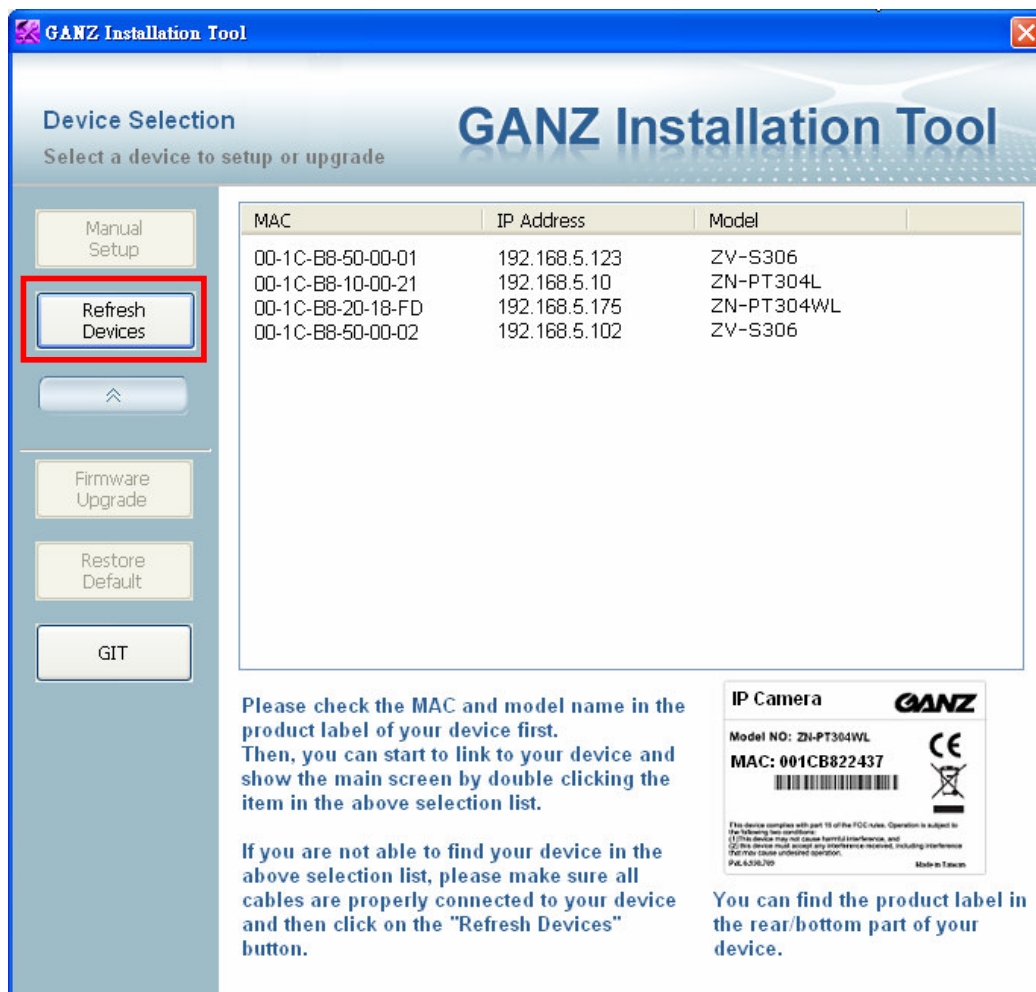


Figure 2-3 Refresh devices

Clicking on the **“Refresh Devices”** button will refresh the device list (Figure 2-3) and search all devices on the LAN again. Refreshing the device list will take several seconds. If you want to link to your device, double-clicking it on your device list will lead you to the browser for operating your device.



2.1.2 Function buttons

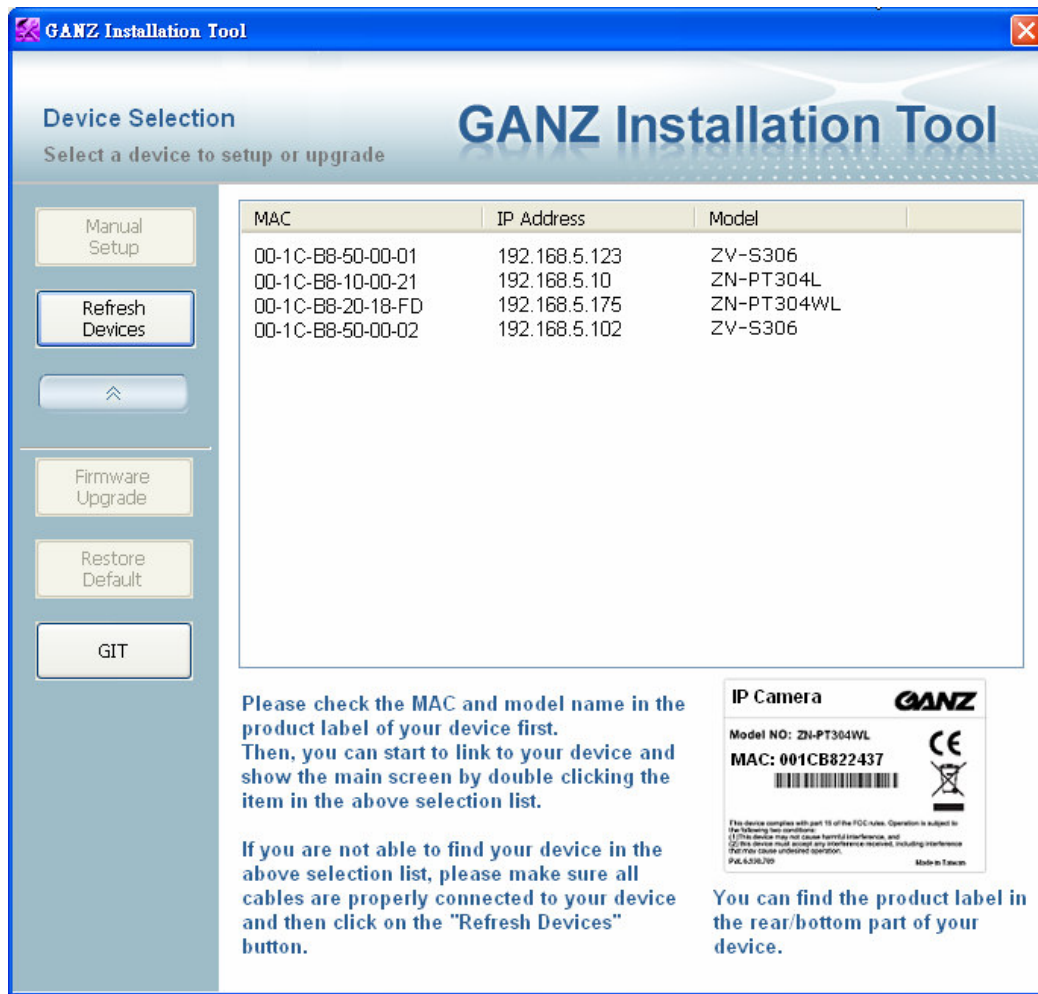
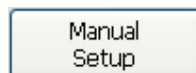


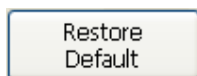
Figure 2-4 Function buttons



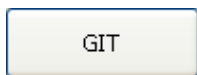
Click on this button to modify the setting of the selected devices. For more detail, please refer to 2.2 Manual Setup.



Click on this button to upgrade the firmware of the selected devices. For more detail, please refer to 2.3 Upgrade



Click on this button to restore the selected device to factory default.



Click on this button to get version information of the GANZ Installation Tool.



2.2 Manual Setup

When you select one device in the selection list, the “**Manual Setup**” button will be enabled. Click on it to modify the settings of the selected device. After clicked on the “**Manual Setup**” button, the GANZ Installation Tool would try to connect to the selected device.

If the authentication is failed, there would be a pop-up dialog window (see Figure 2-5) to ask for correct password. If you failed three times, the GANZ Installation Tool would show you a warning dialog window

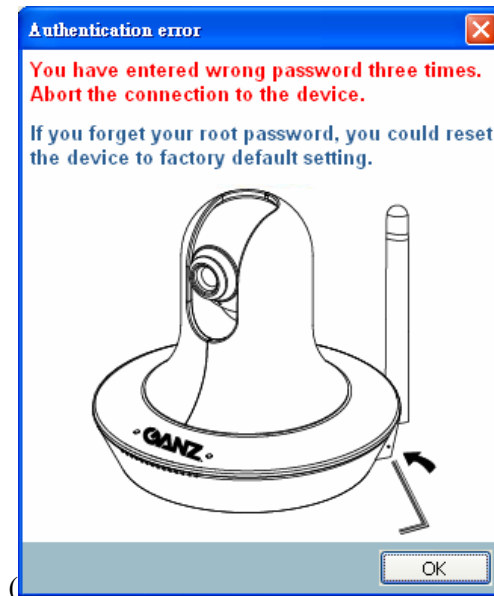


Figure 2-6) and abort the connecting to the selected device.

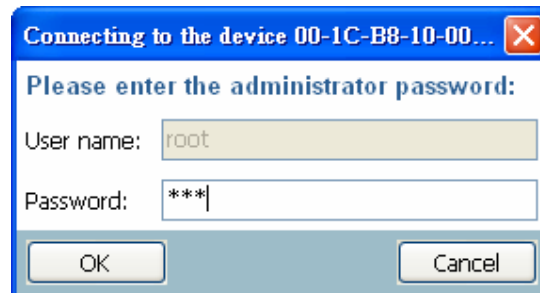


Figure 2-5 Authentication Dialog Window

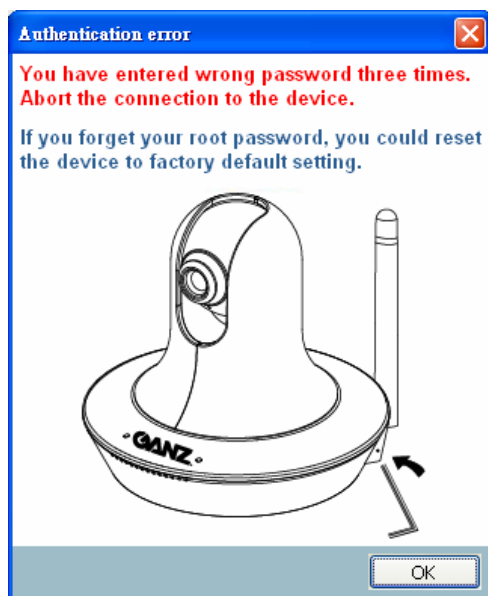


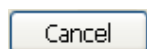
Figure 2-6 Authentication error

2.2.1 System Setting

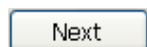
After connected to the selected device, the GANZ Installation Tool will switch to system setting page as shown in Figure 2-7.



Figure 2-7 System setting page



Click on this button to cancel the setup progress.



Click on this button to keep the present setting and go to the next page.

2.2.1.1.1 Change Host Name

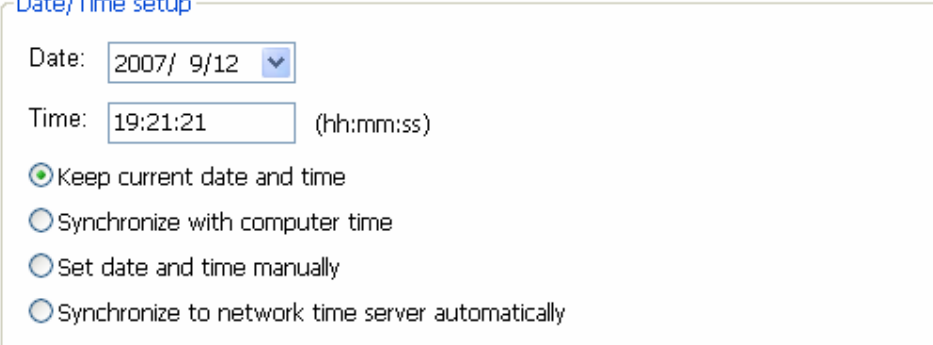
The “**Hostname**” is used for the homepage title of main page and is displayed as the title in the video window of the main page. The maximum string length is 40 characters or 20 characters in double-byte-character-systems like Chinese or Japanese. But for some models supported Unicode, the maximum string length depends on the characters you input, and it may less than 20 characters.



2.2.1.1.2 Change root password

To change the administrator's password, type the new password in both **“Password”** and **“Confirm Password”** text boxes identically. What is typed will be displayed as asterisks for security purposes. The maximum password depends on the server you connected.

2.2.1.1.3 Adjust date and time



The image shows a 'Date/Time setup' window. It contains a 'Date:' label followed by a text box with '2007/ 9/12' and a dropdown arrow. Below it is a 'Time:' label followed by a text box with '19:21:21' and the format '(hh:mm:ss)'. At the bottom, there are four radio button options: 'Keep current date and time' (which is selected), 'Synchronize with computer time', 'Set date and time manually', and 'Synchronize to network time server automatically'.

Figure 2-8 Date/Time setup

There are three ways to adjust system date and time (Figure 2-8):

1. **“Synchronize with computer time”**: The easiest way is to make device synchronized with your computer time.
2. **“Set date and time manually”**: Set the date and time manually by entering new values. Notice the format in the related field while typing.
3. **“Synchronize to network time server automatically”**: Make device automatically synchronize with timeservers over the Internet every hour.

If you want to keep the current date and time, please choose **“Keep current date and time”**.



2.2.2 Network Setting

The GANZ Installation Tool can help you to setup the network connection with LAN or PPPoE. After you clicked on the **“Next”** button on the System page, the GANZ Installation Tool would lead you to the PPPoE setting page (Figure 2-9). If you want to connect your server to Internet via PPPoE, please click on **“Yes”** to start the PPPoE setting process, or click on **“No”** to invoke the LAN setting.

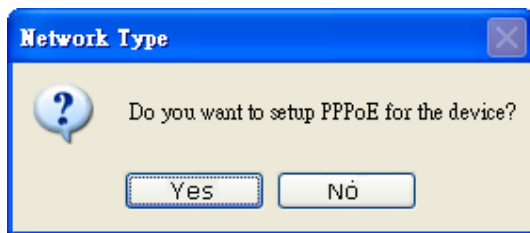


Figure 2-9 Choosing the network type



2.2.2.1.1 PPPoE Setting

The screenshot shows a window titled "GANZ Installation Tool - Setup Your Device". Inside, the "Internet Account Settings" section is active, with the instruction "Enter your Internet account information". The "GANZ Installation Tool" title is prominently displayed. A progress bar at the top indicates "Step 1 > System" and "Step 2 > PPPoE Setting". The main area contains two input fields: "PPPoE username:" and "PPPoE password:". Below these fields, a blue text box states: "Please enter the username and password provided by your ISP (Internet Service Provider) to connect to Internet by PPPoE." At the bottom, there are three buttons: "Cancel", "Back", and "Next".

Figure 2-20 Network setting for PPPoE

If you click on **“Yes”** in the “Network Type” dialog window, you will be led to the PPPoE setting page. In this page, you can input the **“PPPoE username”** and **“PPPoE password”** provided by your ISP, and then the server will be set to PPPoE mode rather than LAN mode when the setup is completed. If you don’t know the account information, please contact your ISP. After inputting the account information, please click on the **“Next”** button to continue your next step.



2.2.2.1.2 LAN Setting

If you click on “No” in the “Network Type” dialog window, you will be led to the Network setting page. In this page, you can change the server’s IP address, subnet mask, default gateway, primary DNS server, secondary DNS and DHCP server. Please refer to Figure 2-31.

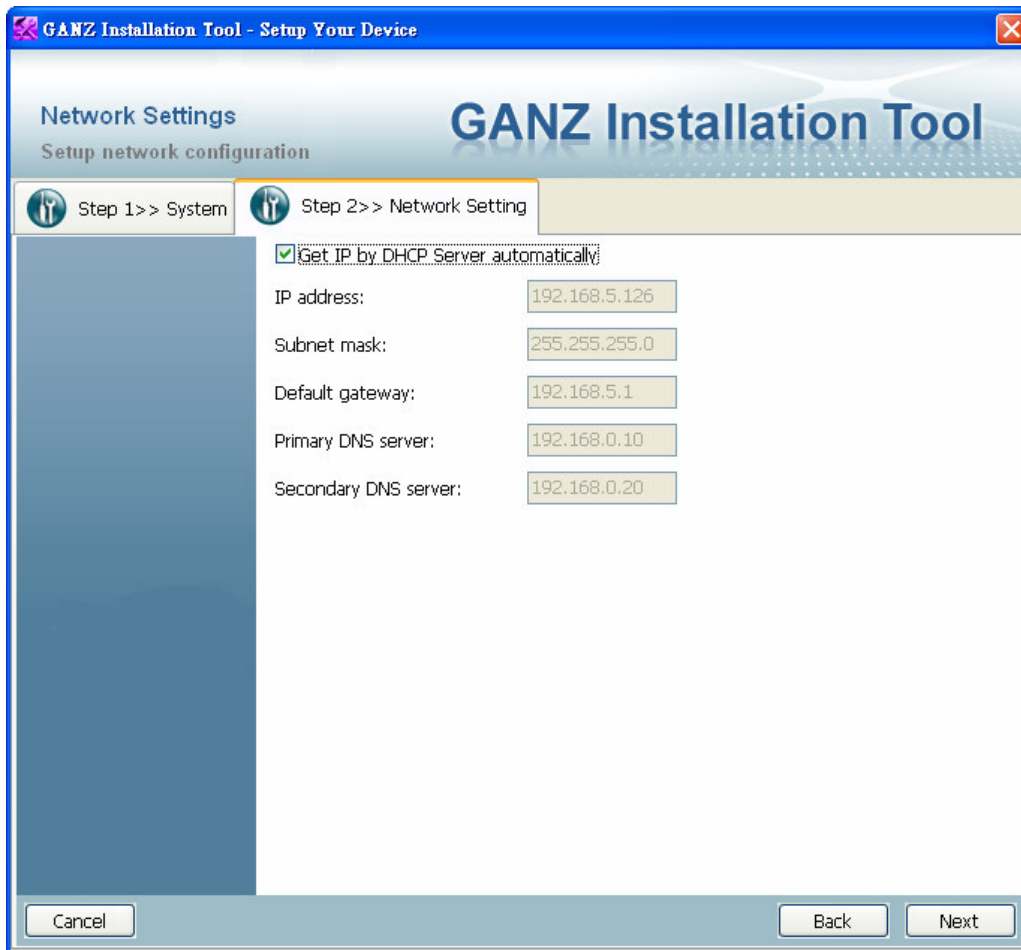


Figure 2-31 Network Setting for LAN

You could set up the network with DHCP or fixed IP:

1. **DHCP:** Check the "**Get IP by DHCP Server automatically**" will force the device to renew its IP address whenever it reboots, and the related network configuration is provided by the DHCP server.
2. **Fixed IP:** If you want the device to use a fixed IP, please uncheck the "**Get IP by DHCP Server automatically**" checkbox and assign a valid IP address, subnet mask, default gateway and DNS server for the device.



2.2.3 Wireless Setting

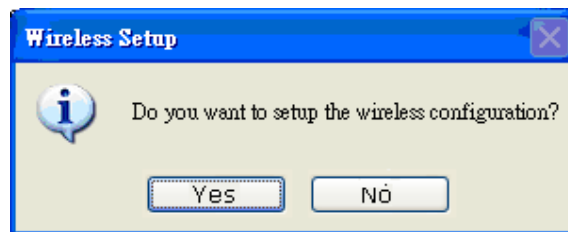


Figure 2-42 Ask if you want to setup the wireless configuration

This above page (Figure 2-12) will show up only when you select the model with wireless support. It allows you to configure the wireless setting. Please refer to Figure 2-57.

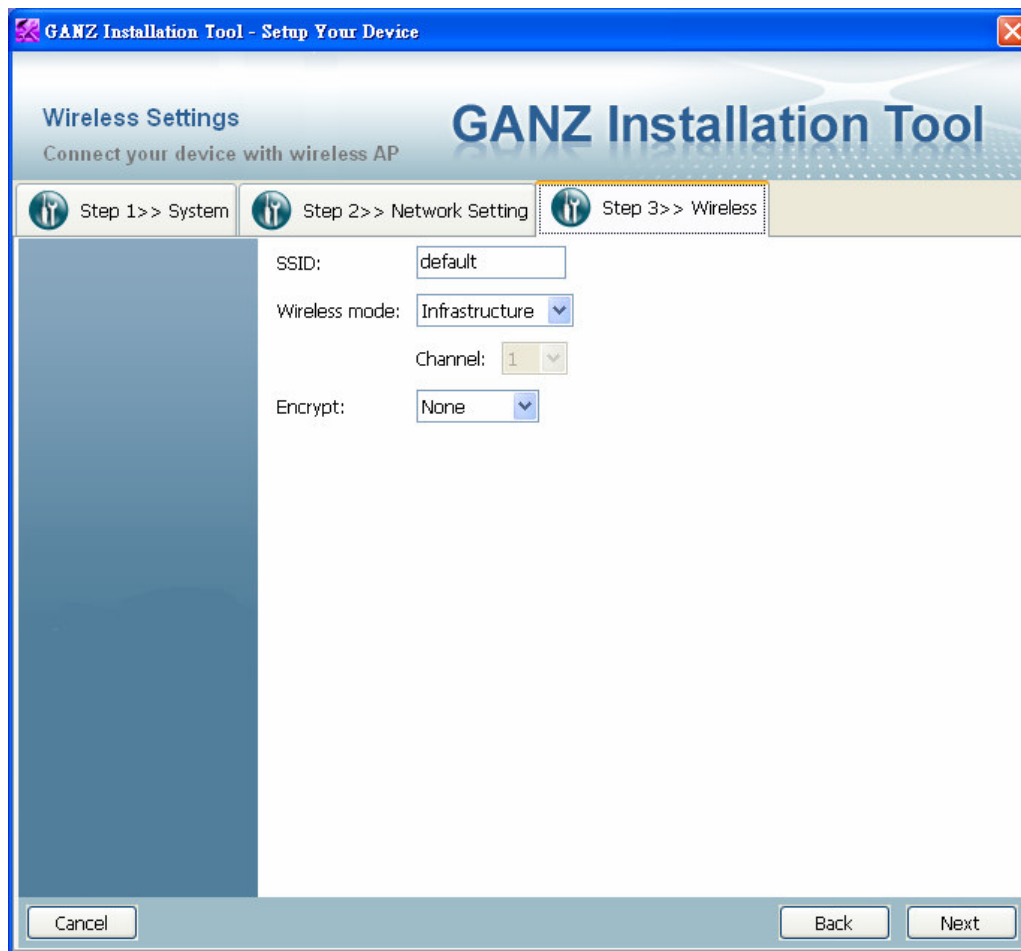


Figure 2-53 Wireless Setting



2.2.3.1.1 Basic Settings

“SSID” (Service Set Identifier), it is a name which identified a wireless network.

Access Points and wireless clients attempting to connect to a specific WLAN (Wireless Local Area Network) must use the same SSID. The default setting is *default*. *Note: The maximum length of SSID is 32 single-byte characters.*

“Wireless mode” Click on the pull-down menu and you can see the following options:

1. **“Infrastructure”** Make the device connect to the WLAN via an Access Point (The default setting). **“Ad-Hoc”** Make the device connect directly to a host equipped with a wireless adapter in peer-to-peer mode.
2. **“Channel”** While in infrastructure mode, the channel will be set automatically to the same channel setting of the selected Access Point. While in Ad-Hoc mode, the channel must be set to the same channel for each wireless adapter. The default channel setting depends on the installed region.



2.2.3.1.2 Data Encryption

“Encrypt” You can choose the encryption type you want in the pull-down menu, there are three items: None, WEP and WPA-PSK.

2.2.3.1.3 None

If your wireless environment doesn’t need encryption, please choose “None”.

2.2.3.1.4 WEP

If your encryption is WEP, please choose the **“WEP”** in the Encrypt pull-down menu (Figure 2-4), and you have to enter the following information.

GANZ Installation Tool - Setup Your Device

Wireless Settings
Connect your device with wireless AP

Step 1 >> System Step 2 >> Network Setting Step 3 >> Wireless

SSID: default

Wireless mode: Infrastructure

Channel: 1

Encrypt: WEP

Auth mode: Shared

Key length: 128bits

Key format: ASCII

☒ 1 ☐ 2 ☐ 3 ☐ 4

Cancel Back Next

Figure 2-14 WEP Setting page



“Auth. Mode” Choose one of the following modes,

“Shared” – allows communication only with other devices on identical WEP settings.

“Open” – communicates the key across the network.

“Key length”: The administrator can select the key length among 64 or 128 bits. The selection will depend on the selected device.

“Key format”: Hexadecimal or ASCII.

“HEX” digits consist of the numbers 0~9 and the letters A-F.

“ASCII” is a code for representing English letters as numbers from 0-127 except “<”, “>” and space characters that are reserved.

“Key”: Enter a key in either hexadecimal or ASCII format. When selecting different key length, acceptable input length is listed as following:

64 bits key length: 10 Hex digits or 5 characters.

128 bits key length: 26 Hex digits or 13 characters.

2.2.3.1.5 WPA-PSK

If your encryption type is WPA, please choose the **“WPA-PSK”**. And you have to enter the pre-shared key and choose a proper encryption algorithm (TKIP, AES)



GANZ Installation Tool - Setup Your Device

Wireless Settings
Connect your device with wireless AP

GANZ Installation Tool

Step 1 >> System Step 2 >> Network Setting **Step 3 >> Wireless**

SSID:

Wireless mode:

Channel:

Encrypt:

Pre-shared key:

Algorithm:

Figure 2-15 WPA-PSK Setting page



2.2.4 Apply to selected device

After configuring all the settings, the apply page will show up (Figure 2-16). Click on **“Apply”** button to apply the changes to the selected device or click on **“Back”** button to go back to the previous page and modify the setting again.



Figure 2-16 Apply page

When you click on the **“Apply”**, it will start to update your settings to server. When it completed, it will show the user interface as shown in Figure 2-17.



GANZ Installation Tool

Device Selection

Select a device to setup or upgrade

Manual Setup

Refresh Devices

⬆

Firmware Upgrade

Restore Default

GIT

GANZ Installation Tool

MAC	IP Address	Model
00-1C-B8-20-10-30	192.168.5.131	ZN-PT304WL

Please check the MAC and model name in the product label of your device first. Then, you can start to link to your device and show the main screen by double clicking the item in the above selection list.

If you are not able to find your device in the above selection list, please make sure all cables are properly connected to your device and then click on the "Refresh Devices" button.

IP Camera

GANZ

Model NO: ZN-PT304WL

MAC: 001CB822437

If this device complies with part 15 of the FCC rules, Operation is subject to the following two conditions:
(1) This device may not cause harmful interference, and
(2) this device must accept any interference received, including interference that may cause undesired operation.

PAL63362/09

Made in Taiwan

You can find the product label in the rear/bottom part of your device.

Figure 2-17 Access Information

2-22



2.3 Upgrade

When you select one device or multiple devices (of the same model), the **“Firmware Upgrade”** button will be enabled. Click on it to upgrade the firmware of the selected device(s) (Figure 2-18). After click on the **“Firmware Upgrade”** button, the GANZ Installation Tool will try to connect the selected device(s) and lead you to the firmware upgrade page.

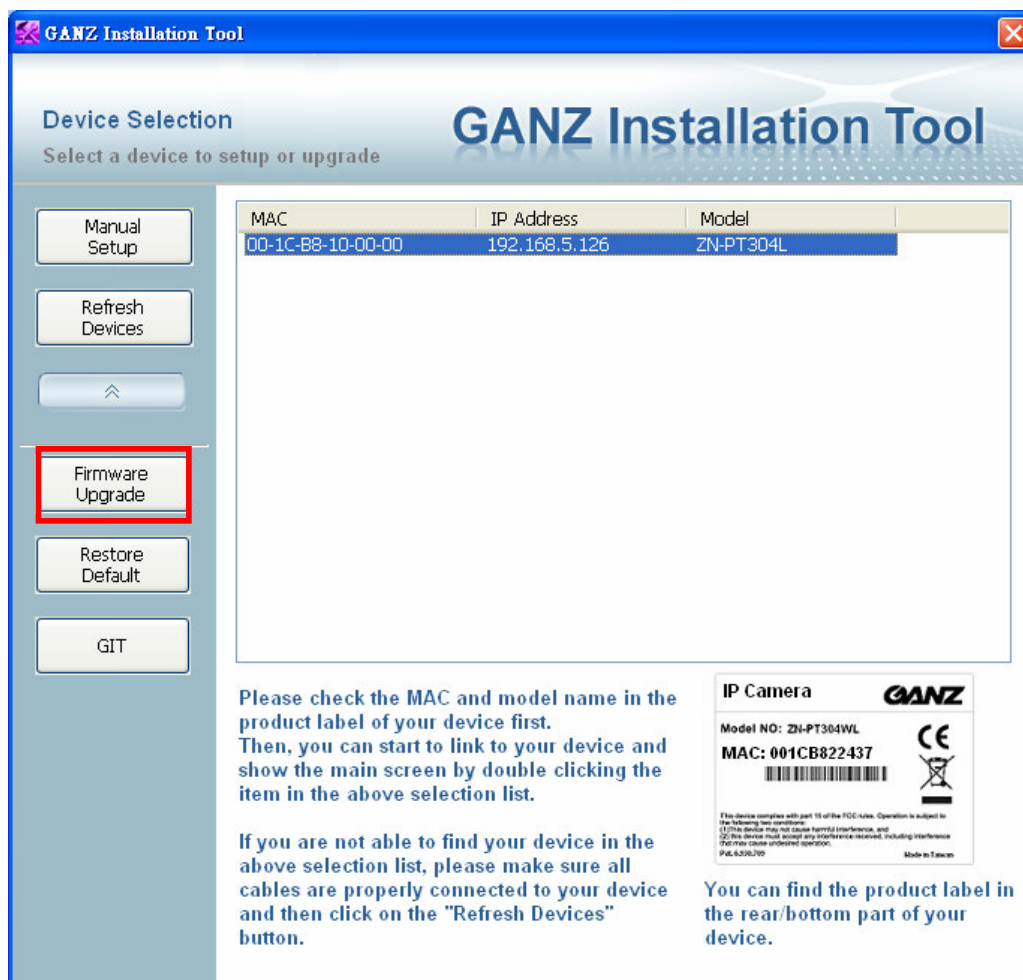


Figure 2-18 Click on the “Firmware Upgrade”



2.3.1 Device Information

After connected to the selected device(s), it would display as shown in Figure 2-19. If you select more than one device, then the device information will show all the selected devices (see Figure 2-20). You can switch to the server info by click on the tab control.



Figure 2-19 Device information

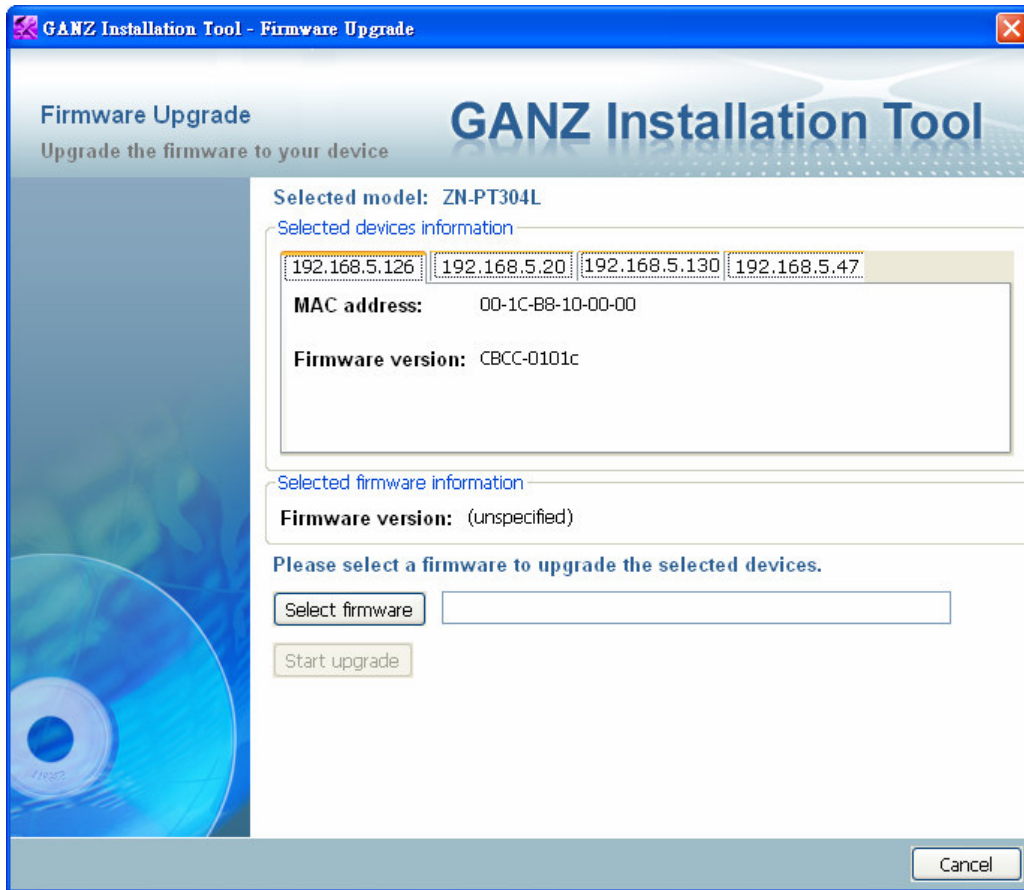


Figure 2-20 Multiple devices information

2.3.2 Firmware Information

The selected firmware information will show the information about the file that you selected.

- **Firmware version:** The version number of the selected firmware.

2.3.3 Select Firmware

You can use the “**Select firmware**” button to browse the file that you want upgrade onto the selected device(s) (Figure 2-21). After selected the file, the GANZ Installation Tool will check whether the file you selected is correct. If it’s the correct version, then the package information will display the information about the file and enable the “**Start Upgrade**” button. Therefore you can click on the button to upgrade the firmware. If not, then it will be a pop-up warning message (Figure 2-22).

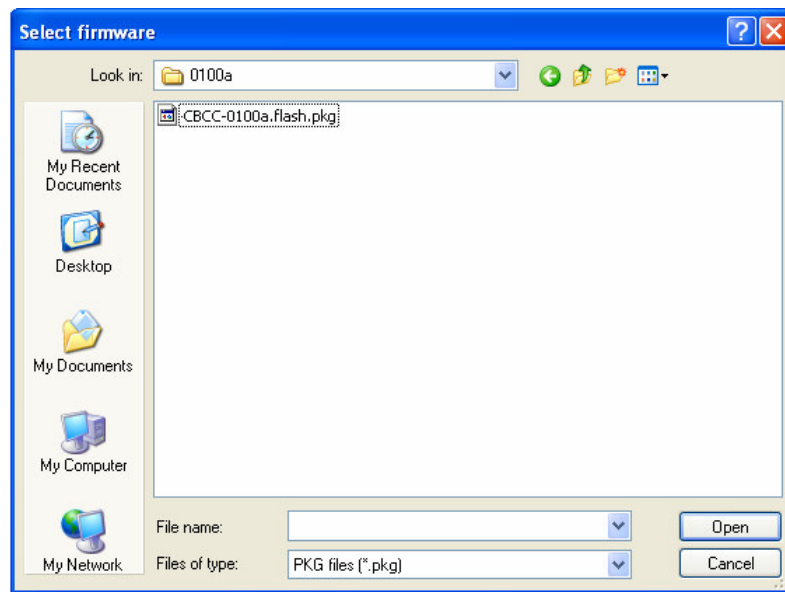


Figure 2-21 Select firmware

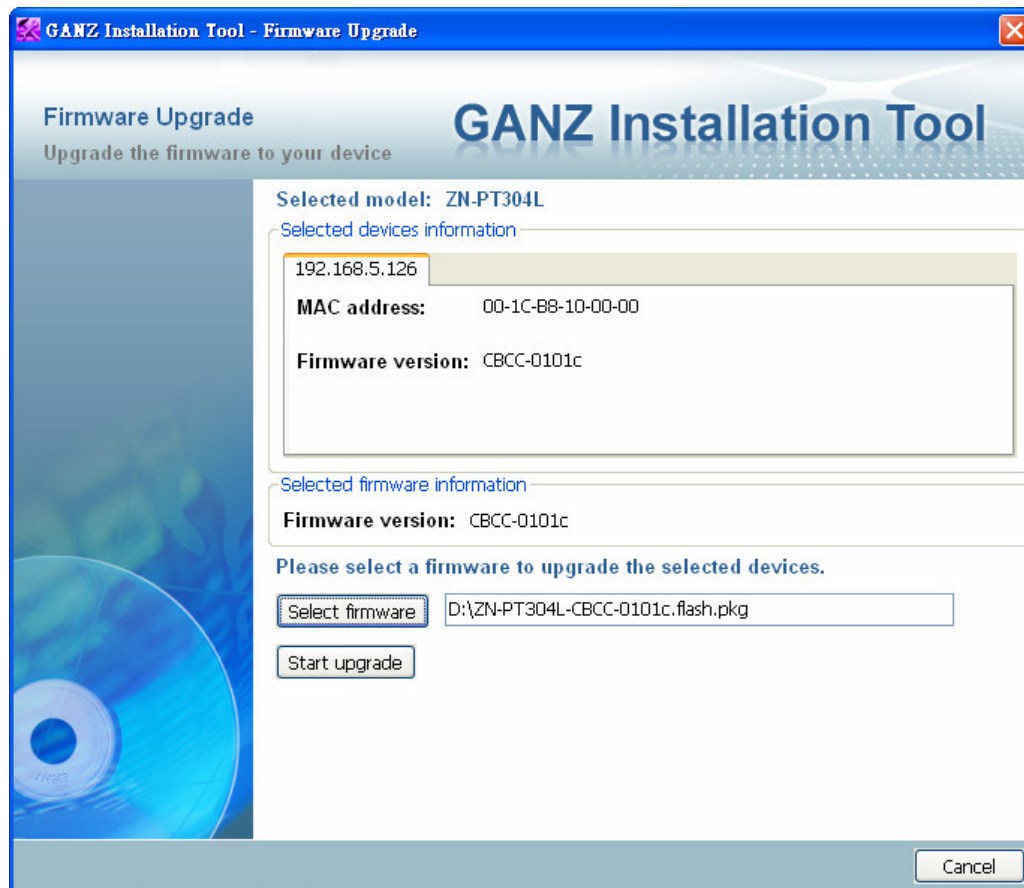


Figure 2-22 Firmware Information



Figure 2-23 Warning message for unmatched firmware

2.3.4 Start Upgrade

Clicking on the **“Start Upgrade”** button to upgrade the firmware of the selected device(s), and it will be a pop-up dialog window to show the progress of the upgrading process (Figure 2-24). Usually, it will take about 5 to 10 minutes to finish the firmware upgrading. It depends on your server model and network bandwidth. We recommend you do the upgrade process in wired LAN environment rather than PPPoE or wireless environment.

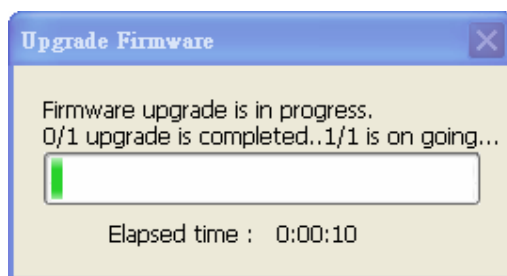


Figure 2-24 Update progress

After the upgrade process had been done, you could see the dialog window as below (Figure 2-25). Please click on the button **“OK”** to finish it.

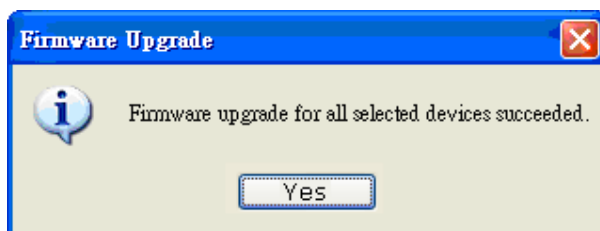


Figure 2-25 Upgrade Done