

GANZ Installation Tool

ZNS-GIT

Operation Manual
ZNS-GIT Software

取扱説明書
ZNS-GIT ソフトウェア



Introduction

Thank you for purchasing our product.

This document is an operation manual for the Ganz Installation Tool (GIT).

Please carefully read this manual before using the product and keep it for future reference.

Microsoft and Windows are registered trademarks of Microsoft Corporation in the United States and other countries.

Acrobat and Adobe are either registered trademarks or trademarks of Adobe Systems Incorporated.

Intel is either a registered trademark or a trademark of the Intel Corporation or its subsidiaries in the United States and other countries.

Other company or product names described in this manual are either trademarks or registered trademarks of their respective companies.

Notice

- You may not copy, reprint, or modify any part or the whole of this manual without our prior approval.
- Contents of this manual are subject to change without notice.
- Please contact us if you have any questions or if there are any errors, missing remarks, misplaced pages, or missing pages in this manual.

1	BEFORE YOU START	4
1.1	OVERVIEW	4
1.2	RECOMMENDED SYSTEM ENVIRONMENT	4
1.3	INSTALLING GIT.....	5
1.4	UNINSTALLING GIT	7
1.5	WINDOWS FIREWALL ALERTS	7
2	GANZ INSTALLATION TOOL OPERATION	8
2.1	RUNNING GIT	8
2.2	CAMERA SEARCH ON THE NETWORK	9
2.3	CAMERA INFORMATION.....	10
2.4	USER AUTHORIZATION.....	11
2.5	NETWORK SETTINGS.....	12
2.6	FIRMWARE UPDATE.....	13
2.7	REBOOT	13

1 Before You Start

1.1 Overview

GIT is software tool that can display camera information, configure the network settings and upgrade the firmware of the camera on the network.

1) Camera information

Camera Name
Model Name
Serial No
F/W Ver
Net Mode
IP Address
Http Port
Subnet Mask
MAC Address

2) Network setting

DHCP/Fixed IP, IP address, Subnet Mask

3) Firmware update

1.2 Recommended System Environment

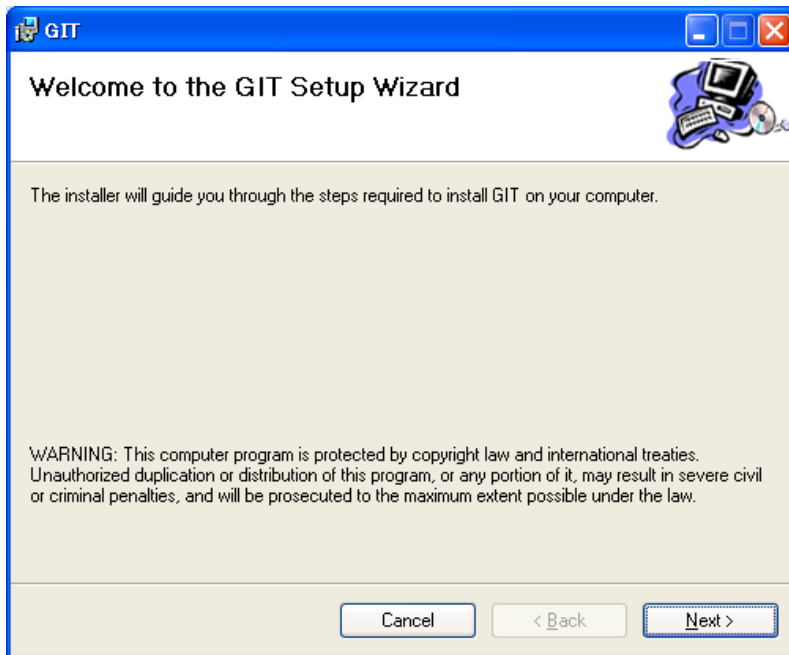
The system environment is as follows:

CPU	Pentium III 600MHz or higher, K6-III or higher
Memory	At least 256MB for XP, 1GB for Vista.
Video Card	XGA (1024x768) or better
HDD	At least 10MB free area
CD Drive	CD-ROM or DVD-ROM drive
Network I/F	10BASE-TX or faster
OS	Windows XP Professional SP3 (32bits) Vista Enterprise Edition SP1 (32bits)
Required libraries	.Net Framework 2.0 or later

1.3 Installing GIT

Insert the installation CD in the CD drive of your PC and browse the content.

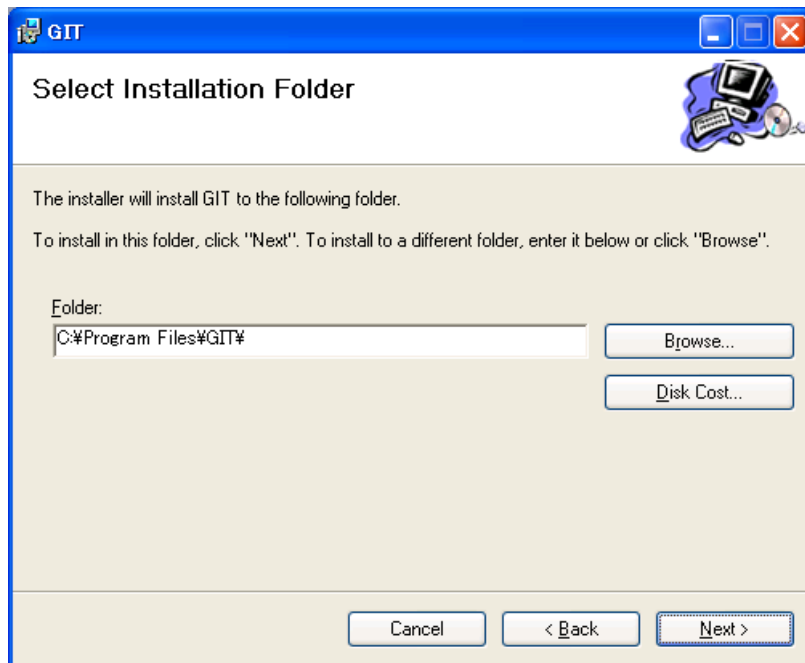
Execute the GIT.msi in \Utility\GIT folder to start install.



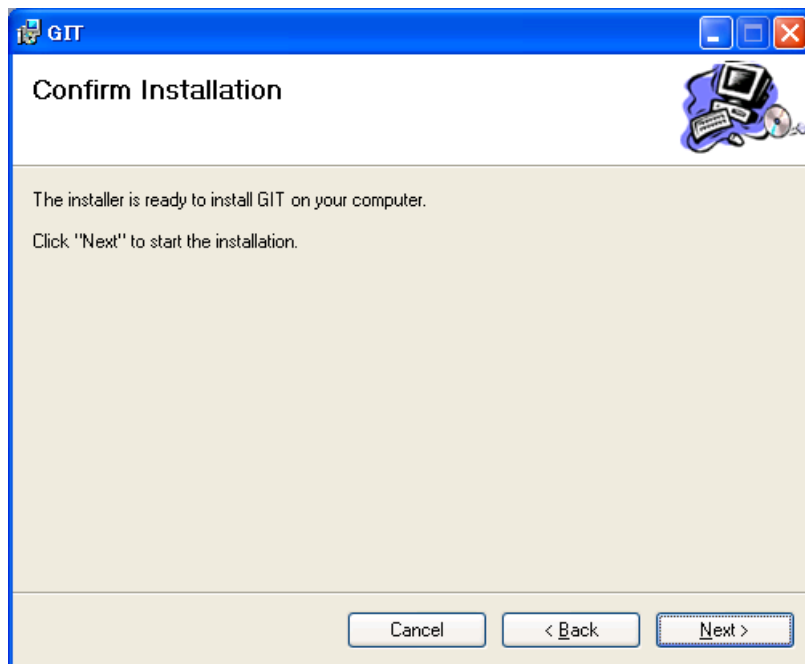
Click “next to proceed installation.

Note1: Administrator authority required to install the program.

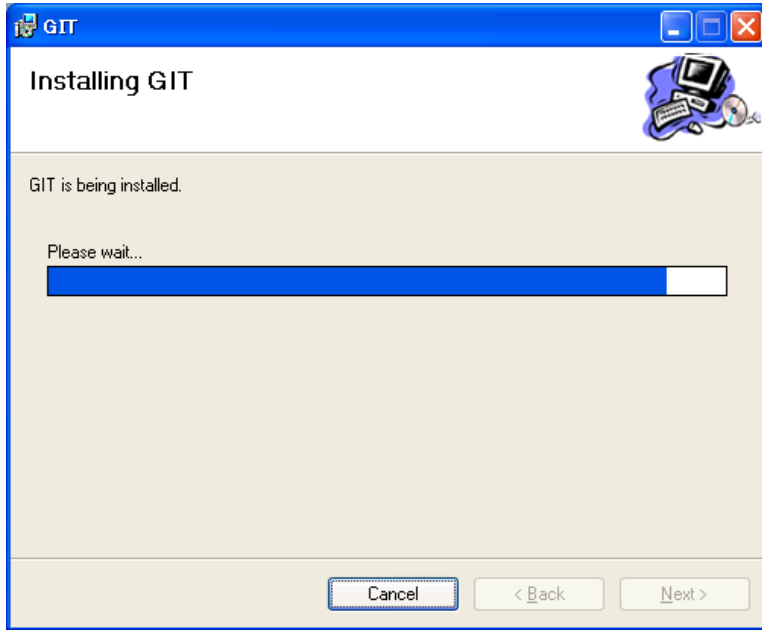
Specify the install directory if necessary.



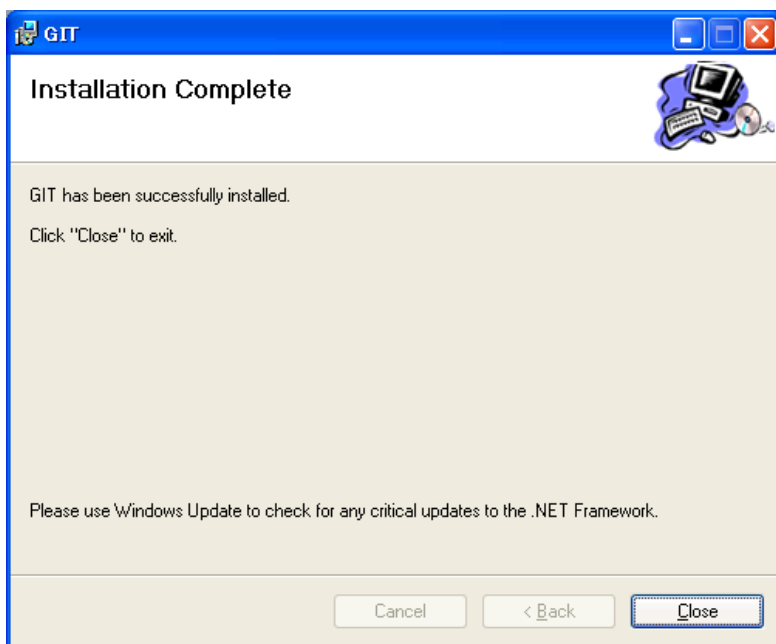
Click "Next" to proceed.



Click "Next" to start installation.



It will take two to five minutes for installation depending on PC performance you installed.



Click “Close” to finish installation.

1.4 Uninstalling GIT

To uninstall GIT from your computer, select from the Start menu [Control Panel] → [Add or Remove Programs].

1.5 Windows Firewall Alerts


GIT must be allowed access to the network.

If your Windows Firewall is active, disable its blocking.

2 GANZ Installation Tool operation

2.1 Running GIT

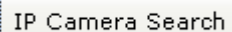


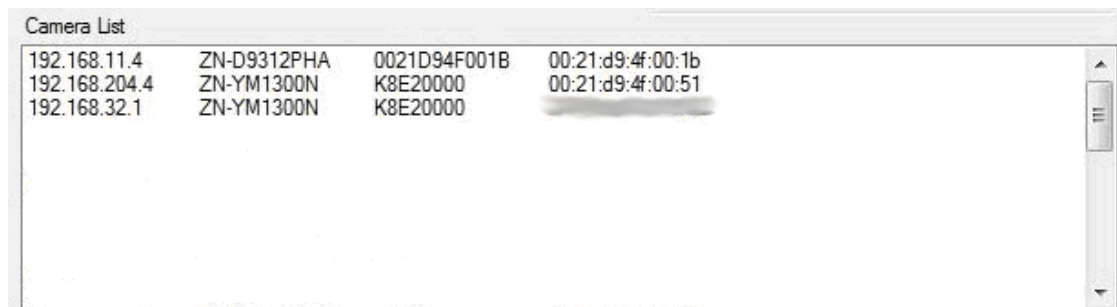
Click  icon on the desktop or select “start” GIT” form Start=>Program menu of Windows Start menu.

A screenshot of the GANZ Installation Tool window. The window has a blue title bar with the text "GANZ Installation Tool" and standard Windows window controls (minimize, maximize, close). Below the title bar is a menu bar with "File" and "About". The main area is divided into three panels: "Auth", "Network", and "Camera Info". The "Auth" panel contains "Admin ID" and "Admin Password" text boxes. The "Network" panel contains radio buttons for "Static" and "DHCP", and text boxes for "IP Address", "Subnet Mask", and "Default Gateway". Below these are buttons for "Set IP Address", "Reboot", and "Program Update". The "Camera Info" panel contains a list of fields: "CameraName", "Model Name", "Serial No", "FW Ver", "Net Mode", "IP Address", "Http Port", "Subnet Mask", and "Mac Address". At the bottom left, there is a button labeled "IP Camera Search" and a section titled "Camera List" with a large empty text area and a vertical scrollbar on the right.

2.2 Camera search on the network

IP Camera Search

Click  button to search IP cameras on the same network. Cameras will be shown in the Camera list. The selected camera information will be shown in “camera info” field.(refer to 2.3 Camera information)

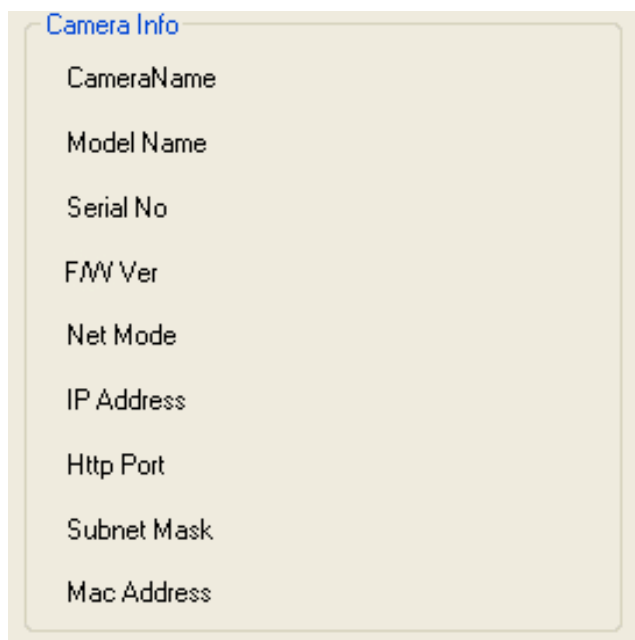


192.168.11.4	ZN-D9312PHA	0021D94F001B	00:21:d9:4f:00:1b
192.168.204.4	ZN-YM1300N	K8E20000	00:21:d9:4f:00:51
192.168.32.1	ZN-YM1300N	K8E20000	

The following function can be selected for selected camera.

- 1) Change Network setting (See section 2.6 Network settings)
- 2) Update firmware (See section 2.7 Update firmware)
- 3) Reboot the camera (See section 2.8 Reboot)

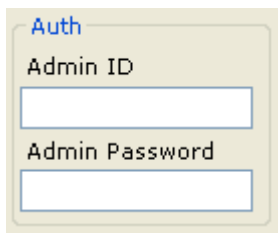
2.3 Camera Information



Camera information of selected camera in “camera list” is shown.

Camera Name
Model Name
Serial No
F/W Ver
Net Mode
IP Address
Http Port
Subnet Mask
Mac Address

2.4 User Authorization



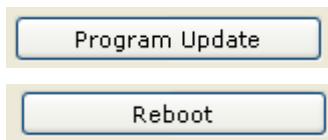
A user authorization form titled "Auth" in blue text. It contains two input fields: "Admin ID" and "Admin Password", each with a corresponding text label above it. The form has a light beige background and a thin border.

Type in Admin ID and password to control camera.

Admin ID : Administrator ID for selected camera

Admin Password : Password for selected camera.

“Program Update” button and Reboot button will be activated when correct ID and password specified.



Two buttons are shown, one above the other. The top button is labeled "Program Update" and the bottom button is labeled "Reboot". Both buttons have a light beige background and a thin border.

2.5 Network settings

The diagram illustrates the state of the network settings interface. On the left, the 'Network' section has two radio buttons: 'Static' and 'DHCP'. Below them are three input fields: 'IP Address', 'Subnet Mask', and 'Default Gateway'. At the bottom is a 'Set IP Address' button. A large arrow points to the right, where a smaller form titled 'Static selected' is shown. This form contains the same three input fields: 'IP Address', 'Subnet Mask', and 'Default Gateway'.

Static : User have to specify static IP address

DHCP : Camera will get IP address from DHCP server.

If “Static” selected IP Address, Subnet Mask and Default Gateway fields will be enabled.

Note1: There are some limitation to set addresses.

IP Address : inhibited 0.xxx.xxx.xxx and xxx.xxx.xxx.255

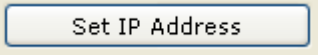
Subnet mask : active range 192.0.0.0~255.255.255.252

Default Gateway : inhibited 0.xxx.xxx.xxx and xxx.xxx.xxx.255

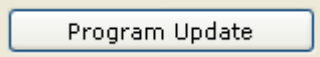
Can not set the same address to IP address and Default Gateway.

Note2: If it failed to assign IP address by DHCP server, net type will be back to “static” and IP address will be set to default value (192.168.0.250).

After setting all parameters, the  button will be activated.

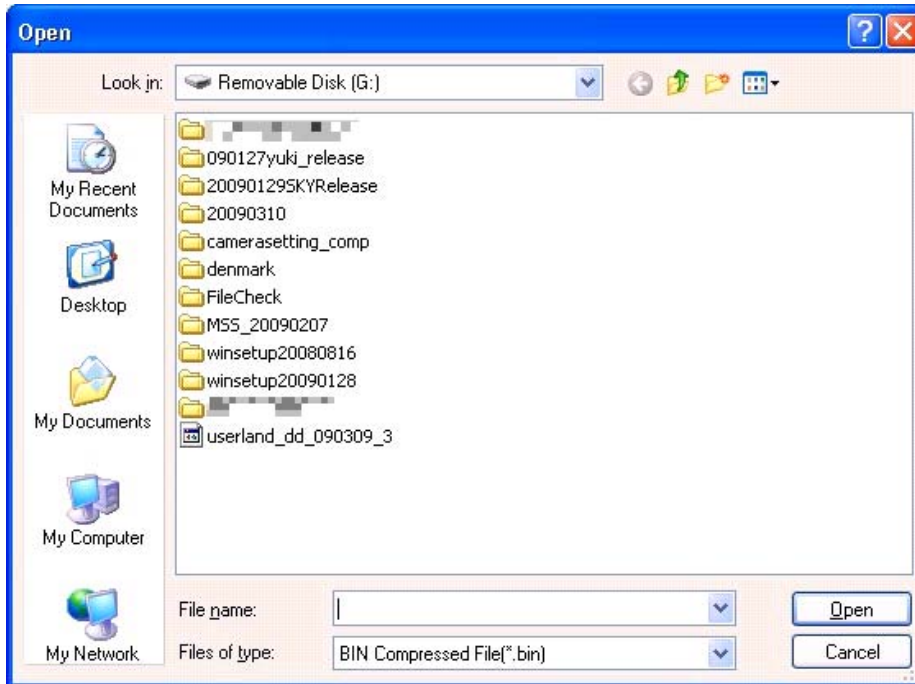
After clicking  button, all network settings will be set to camera and the camera automatically reboots. (It takes two minutes)

2.6 Firmware update

Click  button in order to update firmware.

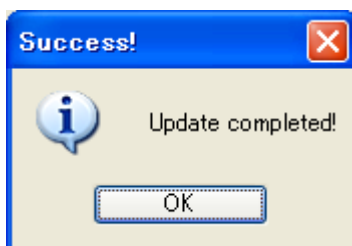
Brows the update firmware file from file open menu and click “open” button.

Firmware update process will start. It will take maximum 15 minutes to finish update process (depend on network condition or PC performance)

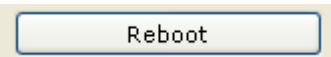


When update finished the “Success” window will be shown and camera will be rebooted automatically. Reboot takes two minutes.

DO NOT turn off PC or camera power during update process!!



2.7 Reboot

Click  button for manual reboot.

It will take two minutes for reboot.

ZNS-GIT Software Operation Manual

Prepared/Published by:

CBC Co., Ltd.

2-15-13, Tsukishima, Chuo-ku, Tokyo 104-0052

<http://www.ganz.jp> Published in April 2009. Version, 1 Administration No.K9C189530-01-GIT-US